

BETRONOMYAI — Think faster.
Decide more accurately.

Betronomy AI — is not an adaptation of someone else's model. It is artificial intelligence developed entirely from scratch, built by our team for our tasks. It does not copy someone else's approach — it changes the rules of the game.



Two ecosystems
two ways of application

Corporate segment

We use Betronomy AI in a highly specialized professional environment:

- Sports analytics
- Analysis of betting market behavior
- Statistical modeling



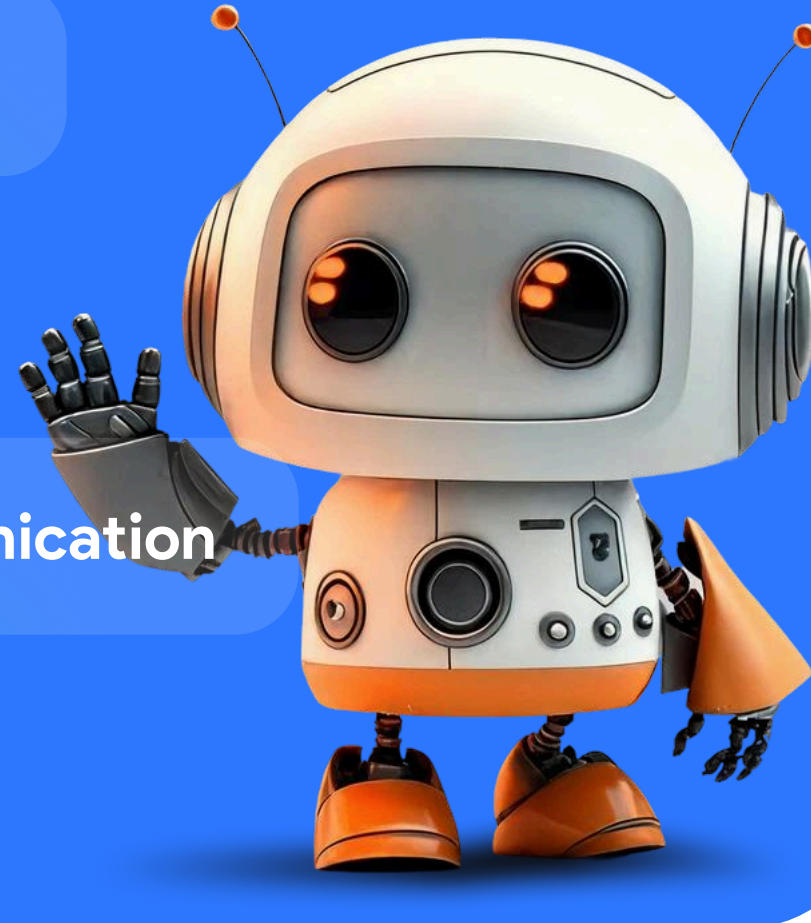
Betronomy's artificial intelligence is capable of:

- Scan betting markets in real time
- Make dozens of accurate bets simultaneously
- Manage capital like a high-frequency trader
- Generate up to 100% profit on the first day

User segment

Here, Betronomy AI is a new generation smart assistant that helps:

- Solve everyday and work-related tasks
- Answer any questions
- Assist with learning, work, and communication
- Plan, search, structure

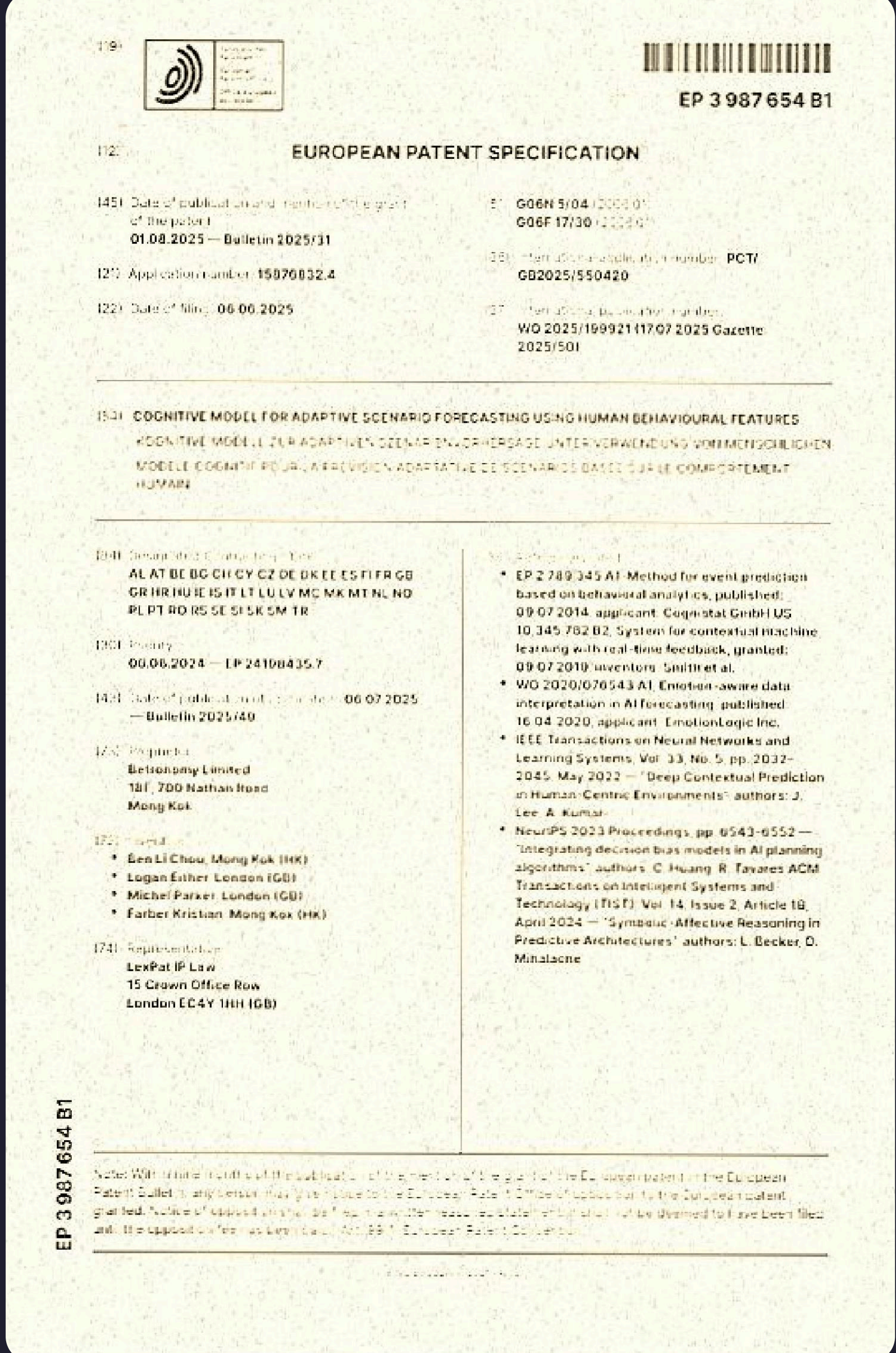


Patent-proven technology

Betronomy AI operates on the basis of a unique cognitive model, officially protected by a patent entitled:

«Cognitive Model for Adaptive Scenario Forecasting Using Human Behavioural Features»

- Processing uncertainty signals
- Building adaptive forecasting scenarios
- Using human behavioral patterns
- Modular architecture for real-time decision making
- Integration of cognitive layers into analysis and strategy



We didn't just create AI. We have established it as a new level of technological standard, protected by law.

Betronomy AI PRO

A personal AI assistant, that thinks along with you PRO — is a stable, fast, and flexible version of Betronomy AI, available to authorized users or by subscription starting at \$15.

It is designed for everyday productivity and works as an intelligent partner in dialogue:

- Understands and preserves context
- Builds logical chains
- Independently creates a description of its role and functionality for the user
- Able to write, analyze, propose, simplify, and accelerate processes

Who it is suitable for:

- Freelancers and entrepreneurs
- Specialists working with information
- Educational projects
- For those who want to break free from routine

Technically:

- Uses its own language core
- Works quickly, accurately, without distorting the meaning
- Secure authorization, cloud infrastructure

Betronomy AI ULTRA

VEO3-level digital intelligence. Currently in development. ULTRA is the flagship version of Betronomy AI, which is currently in closed testing. It is being developed as a cognitive system with advanced intelligence, capable of making decisions, learning, and acting in complex multitasking environments.

Application

- R&D, investments, finance
- Strategic planning
- Risk analytics
- Corporate governance

Features of Betronomy AI ULTRA:

- Modular neural architecture with cognitive logic
- Parallelization of analysis, strategy, and visual perception
- Multilayer adaptive memory
- Predictive modeling (probability trees, scenario thinking)
- Multimodality: text, behavior, events, signals
- Approaches similar to VEO3 systems

ULTRA — This is not an assistant. It is a fully-fledged digital intelligence capable of becoming your second strategic mind. It will be available by license and invitation in the future.

Why is this important?

Betronomy AI — it's not just another AI

- Developed entirely from scratch
- Divided into two powerful areas: consumer and corporate
- Already operating in the investment environment today
- Designed not to copy, but to replace old approaches
- Doesn't offer — delivers results

BETRONOMYAI — it's intelligence that works

The next step is to use

BNAI Betronomy AI

An active element of the Betronomy ecosystem, providing real returns for the company and investors.

BNAI Betronomy AI PRO is already available

Sign up or subscribe and start using your AI assistant

BNAI Betronomy AI ULTRA in development

Follow the news to be the first to gain access

It's not just technology. It's a step towards digital autonomy. Betronomy AI — the power of thinking. Speed of response. Investment in intelligence.